

Route to L'Enclos

This map shows three possible routes from Carcassonne airport to us at Limbrassac. The following pages give details for the middle route shown in darker blue as it is the quickest and easiest.



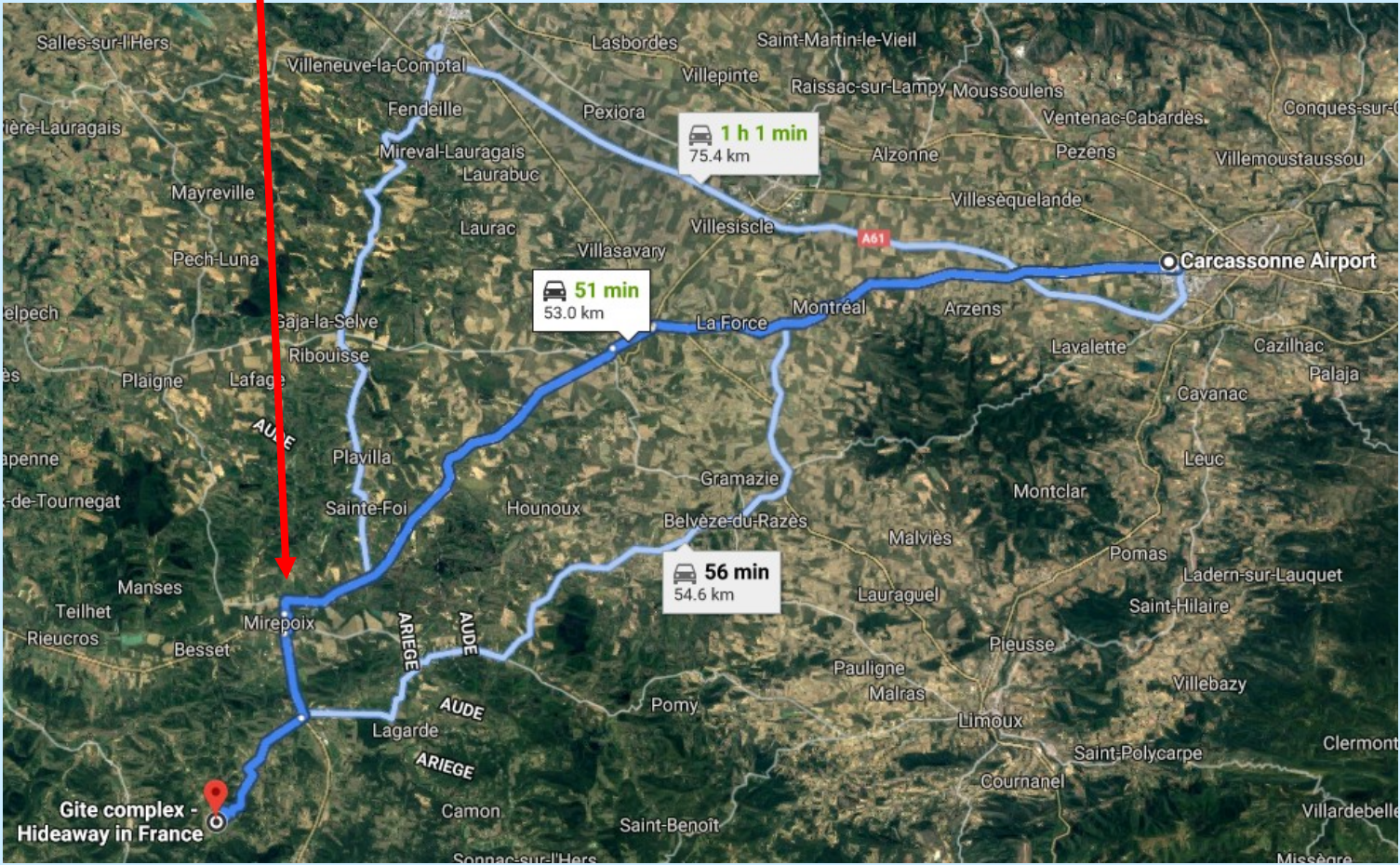
Leaving Carcassonne airport

They are constantly changing the roads around the airport, so we can't be exact on where you will leave the airport complex. Just follow 'Toutes directions (all routes)' or 'Sortie (Exit)' to find your way out of the airport and on to the D119. Turn right signposted Foix or Mirepoix



Carcassonne to Mirepoix

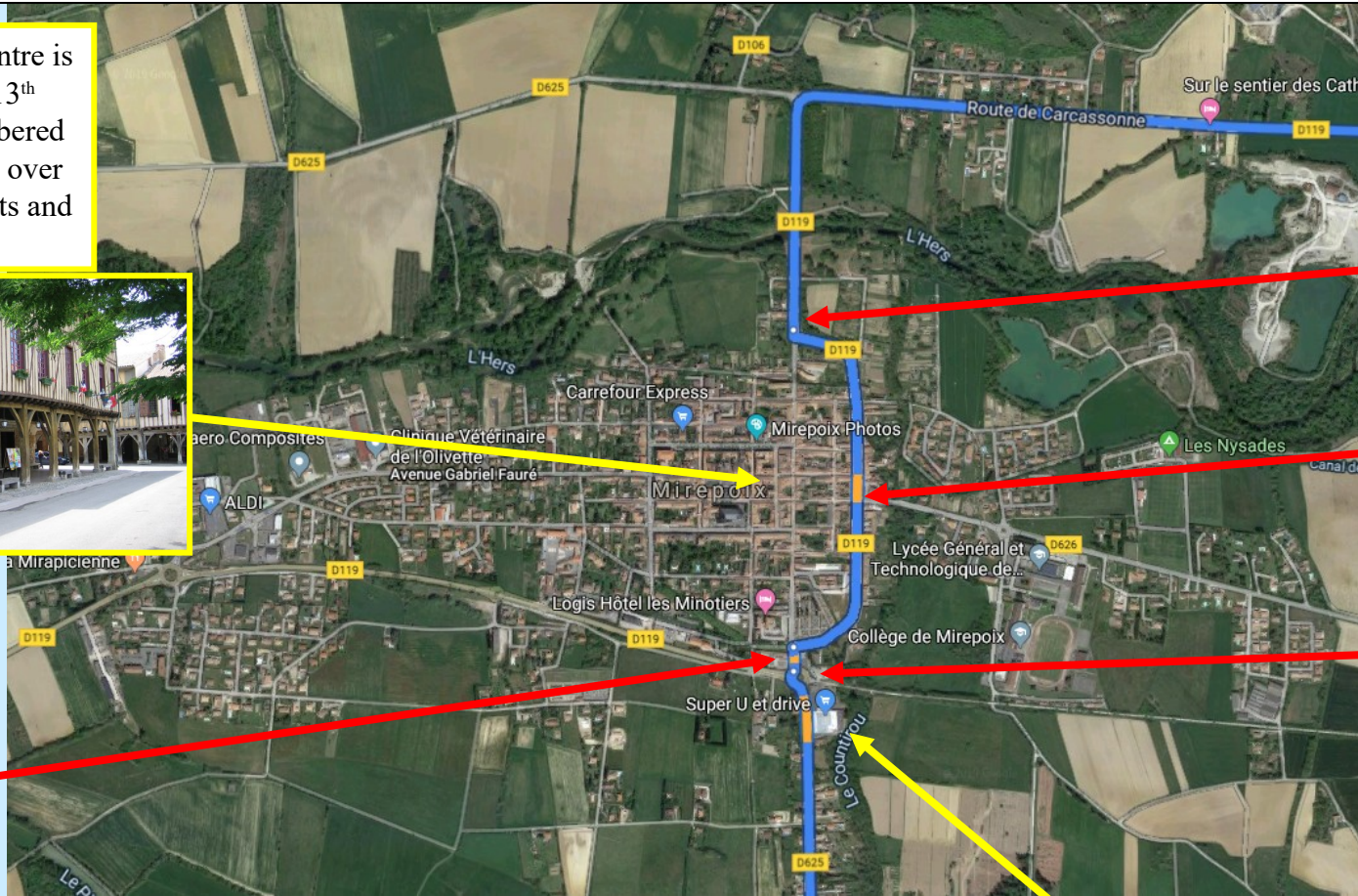
Follow the D119, signposted all the way to Mirepoix



Around Mirepoix

1. Cross the river on the way into Mirepoix and take the first left after the bridge
2. Go straight across the traffic lights
3. Turn left at the mini-roundabout by the petrol station
4. Take the second exit at the next roundabout (by the Super U supermarket) signposted Lavelanet D625

Mirepoix centre is a lovely 13th century timbered arcade with over 30 restaurants and cafes



To the village

1. On entry to La Bastide de Bousignac (the first village after Mirepoix) turn right (signposted Limbrassac)
2. Bear left at the junction where St Julien de Gras Capou is signposted to the right
See next page for the last few metres



In the village

1. You know you've arrived at Limbrassac when you find the hairpin bend!
2. Continue down and along the bottom of the valley until you cross the stream and the road bends uphill
3. As the road bends back left, we are in front of you on the right, turn in through the black gates

